

FLORIDA



LICENSE PLATES

State of Florida
Department of Highway Safety and Motor Vehicles
Division of Motor Vehicles

Neil Kirkman Building
2900 Apalachee Parkway
Tallahassee, Florida 32399-0600

For more detailed information on these license
plates, please visit our website:

<http://www.hsmv.state.fl.us>



**Department of
Highway Safety and
Motor Vehicles**

STANDARD / PERSONALIZED



Standard
(Sunshine State)



Standard
(Motorcycle)



Standard
(County Name)



Personalized
(Sunshine State)



Personalized
(Motorcycle)

Number of standard / personalized
license plates: 5

LEGISLATIVE / DIPLOMATIC



Foreign Organization



Honorary Consul



Member of Congress



State Legislator



State Senator



U.S. Senator

Number of legislative / diplomatic
license plates: 6

DISABLED PERSON



Disabled Persons Parking
Identification Permit

EXPIRES
Decal

FLORIDA
DEPARTMENT OF HIGHWAY
SAFETY AND MOTOR VEHICLES



TEMPORARY
Disabled Persons Parking
Identification Permit

EXPIRES
Decal

FLORIDA
DEPARTMENT OF HIGHWAY
SAFETY AND MOTOR VEHICLES



Wheelchair Symbol
(Standard)



Wheelchair Symbol
(Motorcycle)

Number of disabled persons
license plates: 2

COMMERCIAL VEHICLE



Apportioned "IRP"



Fleet



Heavy Truck
(Dual Plates)



Permanent Trailer



Restricted



Transporter



Wrecker (Standard)



Wrecker (GVW)

Number of commercial vehicle
license plates: 8

MILITARY SERVICES



Disabled Veterans
(Standard)



Disabled Veterans
(Wheelchair Symbol)



Disabled Veterans
(Motorcycle)



Ex-Prisoner of War



Medal of Honor
(Air Force)



Medal of Honor
(Army)



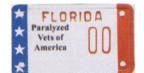
Medal of Honor
(Navy)



National Guard



Paralyzed Veterans
of America



Paralyzed Veterans
of America - Motorcycle



Pearl Harbor Survivor



Purple Heart



U.S. Reserve

Number of military license plates: 13

NATIVE AMERICAN



Miccosukee Indian



Seminole Indian

OTHER LICENSE PLATES



Amateur Radio



X-Series



Dealer (Standard)



Dealer (Motorcycle)



Manufacturer (Standard)



Manufacturer
(Motorcycle)



Press



Temporary Employment



Temporary License Plate

Number of other license plates: 9

HISTORICAL VEHICLE



Antique (Standard)



Antique (Motorcycle)



Horseless Carriage
(Standard)



Horseless Carriage
(Motorcycle)



Street Rod

Number of historical vehicle license plates: 5



Barry University



Bethune-Cookman College



Florida State University



Jacksonville University



Clearwater Christian College



Eckerd College



Lynn University



New College of Florida



Edward Waters College



Embry-Riddle Aeronautical University



Nova Southeastern University



Palm Beach Atlantic University



Flagler College



Florida A & M University



Ringling School of Art and Design



Rollins College



Florida Atlantic University



Florida College



Saint Leo University



St. Thomas University



Florida Gulf Coast University



Florida Hospital College of Health Sciences



Southeastern College



Stetson University



Florida Institute of Technology



Florida International University



University of Central Florida



University of Florida



Florida Memorial College



Florida Southern College



University of Miami



University of North Florida

ENVIRONMENTAL / WILDLIFE



University of South Florida



University of Tampa



University of West Florida



Warner Southern College

Number of specialty collegiate license plates: 36

PROFESSIONAL SPORTS TEAMS



Florida Marlins



Florida Panthers



Jacksonville Jaguars



Miami Dolphins



Miami Heat



Orlando Magic



Tampa Bay Buccaneers



Tampa Bay Devil Rays



Tampa Bay Lightning

Number of specialty professional sports teams license plates: 9



Conserve Wildlife



Everglades River Of Grass



Fish Florida



Helping Sea Turtles Survive



Indian River Lagoon



Largemouth Bass



Protect Florida Whales



Protect Our Reefs



Protect the Panther



Protect Wild Dolphins



Save the Manatee



Tampa Bay Estuary

Number of specialty environmental / wildlife license plates: 12

AUTHENTICATED



Authenticated
(The owner provides this plate, not the State.)

SPECIAL INTEREST



Agriculture



American Red Cross



State of the Arts



State Wildflower



Boy Scouts of America



Challenger - Columbia



Stop Child Abuse



Stop Heart Disease



Choose Life



End Breast Cancer



Support Education



Support Florida Special Olympics



Florida Sheriffs Youth Ranches



Golf Capital of the World



Support Law Enforcement



U.S. Air Force



Hospice: Every Day Is A Gift



Invest In Children



U.S. Army



U.S. Coast Guard



Keep Kids Drug Free



Motorcycle



U.S. Marine Corps



U.S. Navy



Police Athletic League



Salutes Firefighters



U.S. Olympic Spirit



U.S. Paratrooper *



Salutes Veterans



Share The Road



United We Stand

* U.S. Paratrooper license plates may only be purchased by current or former United States Military Personnel who as part of their military duty, have been trained to jump from flying aircraft.

GOVERNMENTAL



Agency for Workforce
Innovation



Agriculture & Consumer
Services, Dept. of



Labor & Employment
Security, Dept. of



Motor Vehicles, Div. of



City (Standard)



City (Motorcycle)



North Broward
Hospital District



PRIDE



College



Corrections, Dept. of



Public Service
Commission



Sheriff



County (Standard)



County (Motorcycle)



State (Standard)



State (Motorcycle)



Driver Licenses, Div. of



Environmental
Protection, Dept. of



Transportation, Dept. of



Veterans Affairs, Dept. of



Fish & Wildlife
Commission



Florida Highway Patrol
(Standard)



Volunteer Fire Dept.



Water Management District



Florida Highway Patrol
(Motorcycle)



Florida National Guard

Number of governmental license plates: 26

FRONT END FOR EMERGENCY PERSONNEL



Emergency Management
Personnel



Emergency Medical
Services



Fire



Police

Number of front end license plates: 4

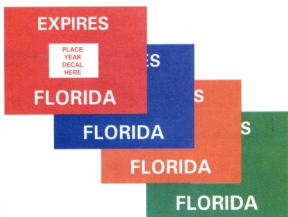
ALL OTHERS



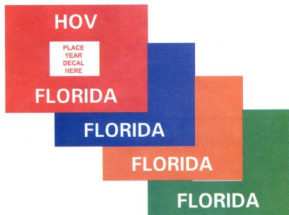
International Fuel Tax Agreement (IFTA)



Permanent Real Property Decal With Validation Decal



Mobile Home / Vessel Decal Without Validation Decal
(Color Rotates Each Year - Red, Blue, Orange, and Green.)



High Occupancy Vehicle Decal Without Validation Decal
(Color Rotates Each Year - Red, Blue, Orange, and Green.)

FORM 80001 (FVS) (10/01) **FLORIDA**
APPORTIONED REGISTRATION CAB CARD

THE VEHICLE DESCRIBED AND BEING IDENTIFICATIONALLY REGISTERED BETWEEN THE STATE OF FLORIDA AND THE JURISDICTIONS BELOW
PLATE NUMBER: EXPIRES:

Year	Make	Type	Plate No.	1-1000 (Equipment)
Year	Make	Type	Plate No.	1-1000 (Equipment)
Make	Model	Weight	Engine	Weight
Make	Model	Weight	Engine	Weight
FL Plate	FL Make	FL Date	Other Jur. Date	Total Date
Operator License				

NO ADDITIONS ARE TO BE LISTED AFTER THE NAME OF ADDRESS ON CARD IS ISSUED. THIS CARD MUST BE RETURNED TO THE OFFICE OF REVENUE WHEN THE VEHICLE IS TRANSFERRED TO ANOTHER JURISDICTION. COPIES ARE NOT ALLOWED.

1014531

Apportioned Registration Cab Card



Mobile Home Installation Decal

REG. FEE INIT. FEE COUNTY FEE VESSEL FEE SPTS. FEE TITLE FEE

\$33.10 \$3.00 \$0.00 \$0.00 \$

PLATE ISSUED 02/12/04 INTERNET KIOSK FEE VOLUNTARY

02/12/04 \$0.00 \$ \$336.70

FLORIDA VEHICLE REGISTRATION

DATE ISSUED 02/12/04
ID# 3000101236290
FROM NO000A REG# 00000627 EXP 04/08/05
VIN 1F0140R0L0P0011C 10046883 15/M/2004 F001

JOHN G PUBLIC
222 RAY ST
HAYWARD, FL 33311

L#: 17770 T#: 10191306 BF: 16244 RF: 10191306

Registration Card With Validation Decal

Validation Decals



Validation Decal for Vehicle



Validation Decal for Vessel



Validation Decal for
Mobile Home



Validation Decal for
High Occupancy Vehicle